



steni® *nature*

steni® *imago*

Colour Chart

Anything your heart desire



steni® *nature*

Based on nature's own materials



steni nature protects the building's structure from natural elements, provides total weather resistance and preserves a handsome exterior for many years. 25 million square metres of experience through 40 years time stand as a tribute to our facade panels' qualities. We utilize various types of stone from different geological and geographical sources in order to produce a wide variety of structures and colours.



Available in 5 grades



Tumbled (8-12 mm)



Coarse (5-8 mm)



Medium (3-5 mm)



Fine (1-3 mm)



Fine Micro (1,2-1,8 mm)

Standard colours



SN 100 (F,M,C)



SN 102 (M)



SN 105 (M,F*,C*)



SN 106 (FM,F,M,C*,T*)



SN 111 (M,F*)



SN 116 (M)



SN 117 (F,M,C)



SN 120 (M,F*,C*)



SN 130 (M,F*,C*)



SN 140 (FM,F,M,C,T*)



SN 150 (FM, M, F*,C*,T*)



SN 161 (M,F*)



SN 170 (M,F*)



SN 187 (M,F*,C*)



SN 190 (FM,M,F*)



SN 305 (FM,M)



SN 310 (M)



SN 315 (F)



SN 320 (M,F*)



SN 325 (M)



SN 330 (M,F*)



SN 335 (F)



SN 340 (M,F*)



SN 345 (M,F*)

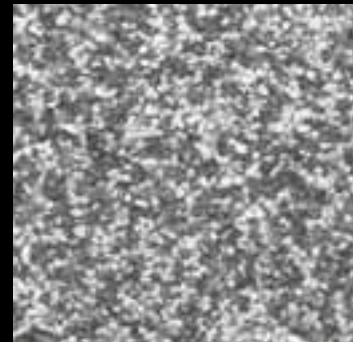
Fine micro (FM), Fine (F), Medium (M), Coarse (C), Tumbled (T)

* Available on request.



The true colours of nature

steni nature can be supplied in 24 different colours and 5 different grades. The panels may also be used in combination, either through a blend of various stone grades and colours on the same facade, or in combination with other building materials.



SN 41 Mix



SN 42 Mix



SN 43 Mix



SN 44 Mix

Many choices of colours, pure style and practical



steni imago is an alternative aiming to achieve a smooth structured surface like conventional render. **steni imago** gives new opportunities within the choice of colour and surface structure. The cladding panel

has a surface of ceramic coated calcined flint, in a standard colour range of 11 pure colours and 4 blends. The ceramic process gives the possibility of a large range of colours upon request, all with a high resistance against UV-rays. A high level of moisture- and weather resistance is decisive to the life cycle of a cladding material or system. Condensation, rain, snow and other environmental conditions may entail moisture-, fungus and mould growth problems. **steni imago** is the safe choice, as the cladding panel is 100% resistant to moisture.

Standard colours



SN 20



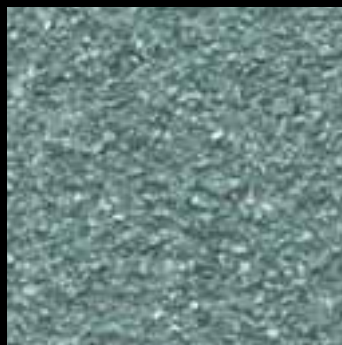
SN 21



SN 22



SN 23



SN 24



SN 25



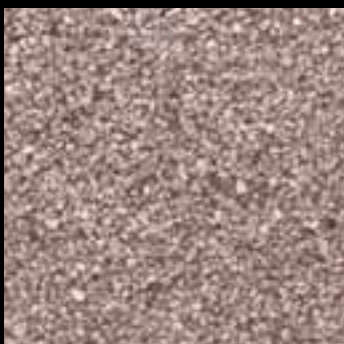
SN 26



SN 27



SN 28



SN 29



SN 30



steni imago comes in colours that even nature herself has not yet created. The surface is ceramic-coloured at a temperature of more than 900 °C, and has a high degree of resistance to UV-rays.

Organisation

steni as is an international company with about 80 employees. We have sales companies in Denmark, Finland and Sweden, and our own sales organisation in Norway. Our production plant is located south of Oslo, where we produce our products for both the national and international markets. In Europe, USA and Canada we have agreements with distributors for sale and marketing of our products.

History

The original **steni** facade panel was developed in Sandefjord, and introduced to the Norwegian market in 1965. The **steni** head office and main production premises are situated at Steinsholt in the municipality of Vestfold in southern Norway. Since we started 40 years ago steni products have grown rapidly, and now cover a wide range of products. Up until now we have delivered more than 25 million m² facade panels.

Products

Exterior panel

- steni nature** – with a surface of crushed natural stone
- steni imago** – with a surface of ceramic coloured stone
- steni colour** – with a surface of hardened acrylic

Interior panel

- steni effect** – with a surface of hardened acrylic for interior use

Balcony panel

- steni duo** – with a two sided surface of hardened acrylic

Foundation panel

- steni terra** – with a surface of crushed natural stone for use on foundations



steni as

Berganmoen - 3277 STEINSHOLT
Tlf.: +47 33 15 56 00 - Fax: +47 33 15 55 70
E-mail: info@steni.no



Building knowledge