

# Cemwood

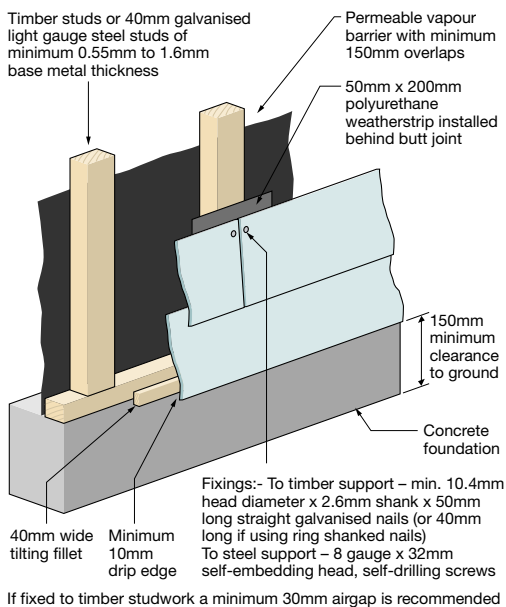
Fibre-cement  
wood-effect weatherboard



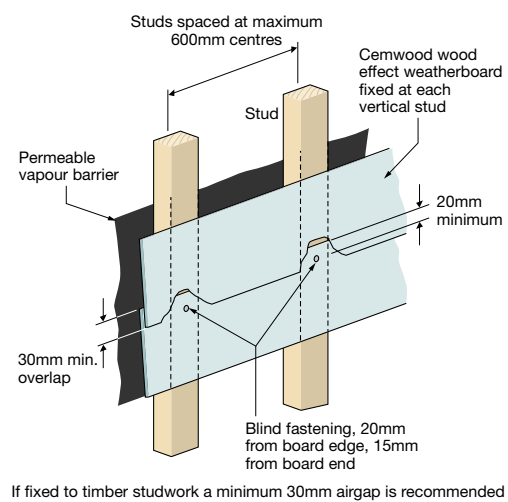
# Installation guidelines

## Horizontal cladding

### Bottom edge (starter detail)



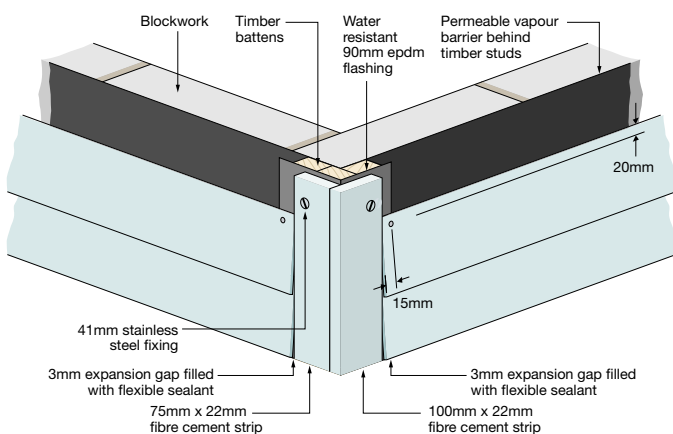
### Horizontal cladding



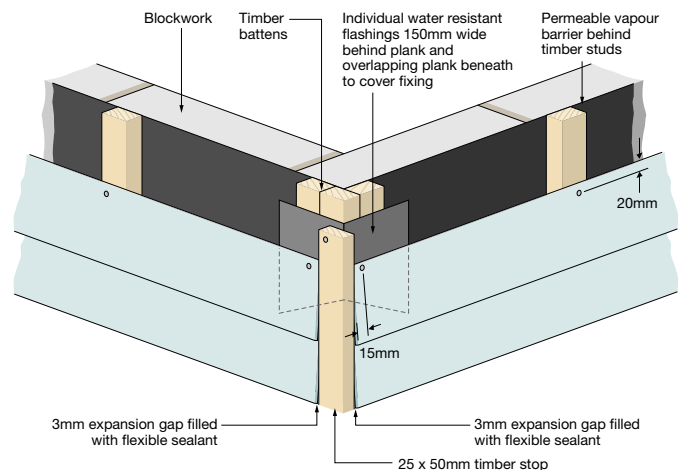
## External corners

Corners can be close mitred or finished with timber corner posts, timber battens, fibre-cement strips or proprietary pvc corner mouldings.

### Fibre cement strip



### Timber batten

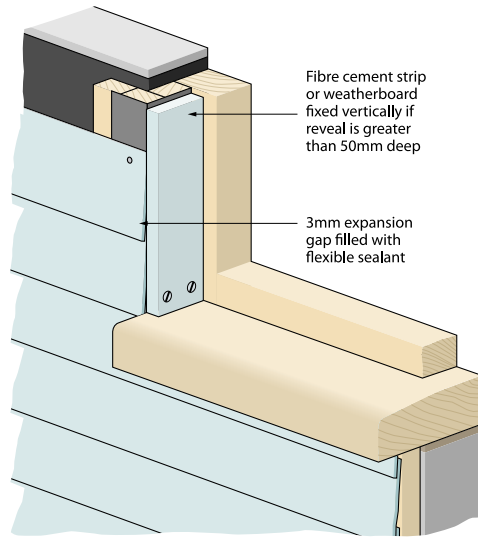
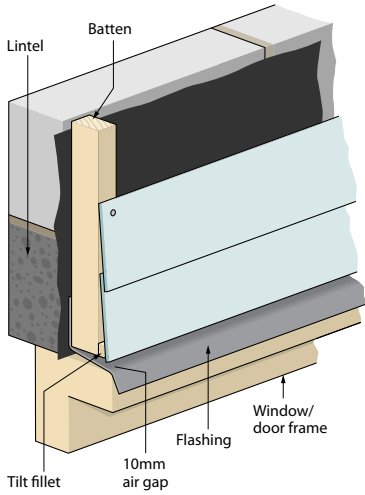


If fixed to timber studwork a minimum 30mm airgap is recommended

\* Both epdm water resistant flashing strip or individual flashings can be used on either close mitred corners, fibre-cement strip or timber batten corner details

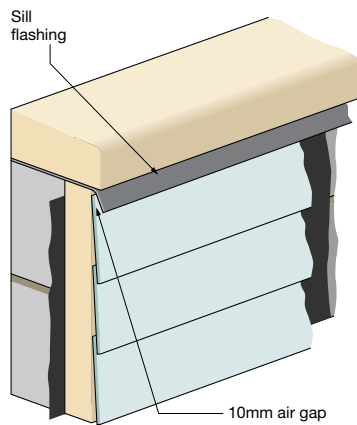
# Openings and abutments

## Above door or window

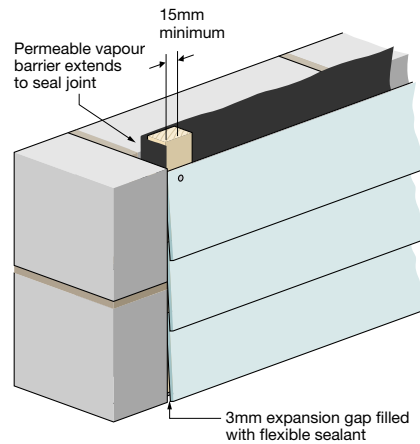


If fixed to timber studwork a minimum 30mm airgap is necessary

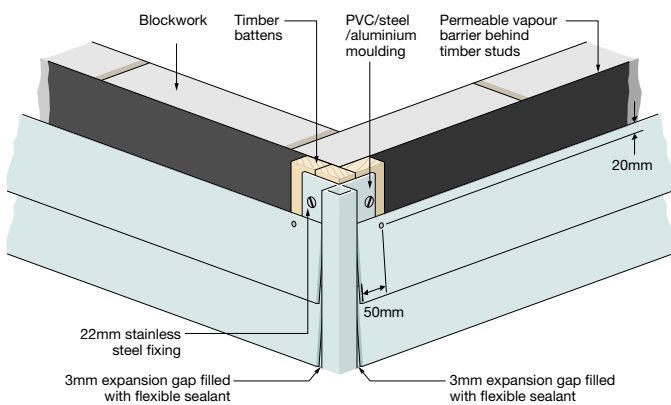
## Below sill or opening



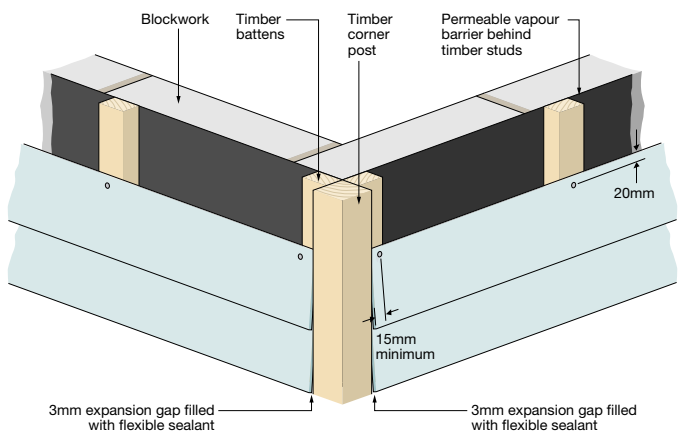
## Reveal/side of opening abutment



## Proprietary corner moulding



## Corner post



## Specification

Dimensions	
Length (mm)	3660
Width (mm)	209
Cover width (mm)	179
Thickness (mm)	7.5
m <sup>2</sup> per length (installed)	0.655
Mass	10.3kg/m <sup>2</sup>
Fire resistance	
Fire propagation	BS 476: Part 6 I = 0.7
Surface spread of flame	BS 476: Part 7 Class One
Combustibility (ASTM E 136)	Non-combustible
Tolerance and properties	
Bending strength	Dry $\geq 14\text{N/mm}^2$ Wet $\geq 7\text{N/mm}^2$
Dry density	1.30g/cm <sup>3</sup>
Modulus of elasticity (average)	8 GPa
Expansion from dry	at 105°C to saturated 0.16%
Thermal conductivity K - value	0.24 W/m <sup>2</sup> K
Thermal resistance R - value	0.031 m <sup>2</sup> K/W

## Colour

Cembrit Cemwood is an autoclaved fibre-cement board with a texture on the front face.

The boards can be supplied grey for on-site painting or staining, or pre-coated subject to a minimum order quantity.

## Guarantee

Most colours are guaranteed for colour stability. Please confirm before ordering. The guarantee is void if boards have been incorrectly handled/stored prior to installation. Boards should not be allowed to become wet before installation. Pre-painted boards can scuff if roughly or frequently handled. Boards should be pre-drilled to accept nail or screw fixing.

Cembrit Ltd are the UK subsidiary of Cembrit Holding A/S, manufacturers and/or distributors of:

### Fibre-cement flat sheets for cladding, fire protection and other internal and external applications

#### Natural slates

#### Fibre-cement slates

#### Cement particle boards

#### High-pressure laminate

#### Cedar and bitumen shingles

#### Corrugated sheets for roofing and cladding

All of the above widely used in the agricultural, industrial, commercial and domestic markets.

We reserve the right to charge carriage.



## Installation

A minimum 10mm clear air gap should be left behind the boards, with 5000mm<sup>2</sup> continuous opening at top and bottom of installation.

A weather-proof membrane should be installed prior to fixing vertical battens.

Boards are installed like shiplap timber weatherboarding with a 30mm lap. Fixings must be a minimum 20mm from the horizontal board edge and 15mm from board end. Fixings should have the appropriate corrosion resistance for the application and location. Generally galvanised nails or screws should be adequate.

Joints between boards should be staggered on successive courses, with at least 3 intervening planks on the same vertical.

Boards should be fixed to vertical battens with 50mm face and a minimum thickness of 30mm if used with timber studwork or 50mm with blockwork, spaced at maximum 600mm centres.

Cembrit Cemwood combines the durability of fibre-cement with the attractive appearance of wood.

- Fire resistant
- Rot and insect resistant
- Unaffected by heat or sunlight
- Does not contain PVC
- Consistently easy to install – no knots, warps, twists or uneven thickness
- Massive choice of finishes

Ideal as a replacement for timber or to maximise new build design options. Popular for use on: park homes, chalets, pavilions, garden houses or coastal installations.

*The information contained in this publication and otherwise supplied to users of the company's products is based on the company's general experience, best knowledge and belief. However, because of factors beyond the company's knowledge and control, which can affect the use of the products, no warranty is given or implied with respect to such information.*

*The company's policy is one of continuous improvement. Cembrit Blunn Limited therefore reserves the right to alter specifications at any time and without notice.*

*Colours and textures may vary according to light and weather conditions. Owing to this and limitations of the printing process, colours in this brochure may vary.*

*Please ensure you have the latest version of this datasheet, by checking that the publication date on the top right of the front cover corresponds with the downloadable version from our website.*



Cembrit Limited  
57 Kellner Road  
London SE28 0AX  
Tel: +44 (0) 20 8301 8900  
Fax: +44 (0) 20 8301 8901  
email: sales@cembrit.co.uk